

GTA Mobile VPN Client



Key Features

GTA Mobile VPN Client

- » IPsec VPN
- » Peer-to-peer VPN
- » Configuration Wizard
- » Portable VPN Configurations
- » NAT-T
- » NAT Through VPN
- » Easy Connection Panel
- » Launch Scripts via Client
- » USB Mode
- » Startup Modes
 - Automatic
 - Manual

For Mobile and Remote Virtual Private Networks

Designed specifically for the mobile work force, the GTA Mobile VPN Client provides the vital ability for employees to securely access corporate network resources. 'Road warriors' or telecommuters must often access mission-critical networks over the Internet and other untrusted networks. An encrypted VPN connection secures that traffic, keeping your data safe from prying eyes even when it's out of your hands.

The GTA Mobile VPN Client forms a secure client-to-client or client-to-gateway communications channel using tunnel mode IPsec VPN technology. Using this secure channel, desktop and notebook computers with Microsoft Windows can safely access sensitive data over any IP-based network environment, such as Ethernet LAN, DSL, cable modem or dial-up. VPN connections provide a secure method for accessing information protected by a GTA Firewall UTM Appliance through untrusted networks.

The GTA Mobile VPN Client can connect with IPsec VPN gateways (such as GTA Firewall UTM Appliances) or another IPsec VPN client (such as the GTA Mobile VPN Client). Multiple VPN connections can be easily managed by using the built-in configuration wizard or by manually entering connection settings.

The GTA Mobile VPN Client licenses TheGreenBow VPN technology, an IPsec VPN client which supports NAT-T, certificate and pre-shared secret authentication, and is interoperable with most IPsec VPN gateways.

Ease of Use

The GTA Mobile VPN Client can readily adapt to connect to virtually any remote VPN gateway. Robust peer-to-peer VPN settings safely connect mobile employees, even when they are both far from your company LAN. Using the GTA Mobile VPN Client, mobile users can access information on the company network.

The GTA Mobile VPN Client includes a configuration wizard for easy setup of the VPN connection, and powerful management features to reduce the complexity of support required to allow remote connections to servers and data on the network. Whether adding one or many mobile VPN users, the GTA Mobile VPN Client offers a variety of powerful management features, such as a configuration wizard, configuration import and export, USB stick-activated mode, software access control, and an easy connection panel.

The configuration wizard is used to quickly configure a VPN connection using a step-by-step interface. Simply enter the basic networking information to make the connection, and the GTA Mobile VPN Client will do the rest. Configurations can be customized to launch automatically on startup or require a manual startup. The client can launch scripts to walk users through the authentication process. Once a VPN configuration has been created, it can be exported from the GTA Mobile VPN Client and then imported into other clients to reduce the time required to duplicate VPN connection settings across a large number of host machines. Doing so reduces the often repetitive task of configuring settings for a variety of users.

Utilizing the USB mode further simplifies use of the GTA Mobile VPN Client in the field. Exported configurations can also be loaded onto a USB stick. Upon detection, the GTA Mobile VPN Client will then load the configuration and transparently connect to the VPN endpoint.

VPN tunnel activation can be hidden and protected from accidental or unauthorized reconfiguration. Other start up options include automatically initiating the VPN connection during computer boot-up or user login, or launching a user defined script for uses such as launching a required application or mapping network drives. The GTA Mobile VPN Client may be set for manual activation as well.

Configured VPN connections can be quickly referenced using the easy connection panel. Combined, these options allow IT professionals to adapt the GTA Mobile VPN Client to meet their needs with minimal time investment.

Option Availability

GB-3000	✓
GB-2000/GB-2000e/GB-2000X	✓
GB-800/GB-800e	✓
GB-250/GB-250e	✓
GB-Ware	✓

Contact your local GTA Channel Partner or GTA Sales for information on option availability for legacy products.



GTA Mobile VPN Client

Interoperability

The GTA Mobile VPN Client transparently maintains a VPN connection, including NAT-T negotiations. The GTA Mobile VPN Client can seamlessly connect with many other third-party IPSec VPN products such as routers, VPN gateway appliances, and firewalls. DES, 3DES, AES, MD-5 and SHA-1 encryption and authentication algorithms are all supported, which gives the GTA Mobile VPN Client the flexibility required to connect to a variety of VPN endpoints.

Security Standards

IPSec with IKE RFCs 2401 and 2409
Tunnel Mode
Transport Mode
NAT-T RFCs 3947 and 3948
X.509 Certificate Support - PKCS#12, PEM, SmartCard
Pre-shared Key Authentication
XAUTH Authentication
DES 56-bit Encryption
3DES 168-bit Encryption
AES with 128-, 192-, or 256-bit Encryption
HMAC MD-5 128 Authentication Hash Algorithm
HMAC SHA-1 160-bit Authentication Hash Algorithm
Diffie Hellman Group 1, Group 2, Group 5, Group 14 Support
IP Payload Compression Protocol (IPCOMP)

Free 30-Day Evaluation

Registered owners of a GTA firewall may download a 30-day evaluation version of the GTA Mobile VPN Client at no charge by visiting the GTA Online Support Center at <http://www.gta.com/support/center>.

System Requirements

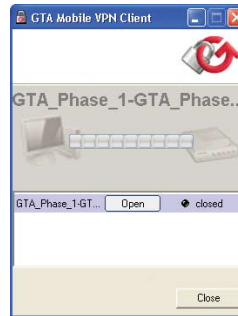
- Pentium-class processor or greater
- 128 MB RAM
- 10 MB hard disk space
- Microsoft Windows ME, NT 4.0 (SP 6), 2000, XP
Microsoft Windows Vista (GTA Mobile VPN Client 4.1 and higher)
- 56K dial-up modem, wireless (WiFi), Ethernet or other compatible network card

Product Part Numbers (Annual Subscription)

GTA Mobile VPN Client, 1 Additional User License	ESVM00-0001-SN000
GTA Mobile VPN Client, 5 Concurrent User License	ESVM00-0005-SN000
GTA Mobile VPN Client, 10 Concurrent User License	ESVM00-0010-SN000
GTA Mobile VPN Client, 50 Concurrent User License	ESVM00-0050-SN000
GTA Mobile VPN Client, 100 Concurrent User License	ESVM00-0100-SN000

Power & Flexibility

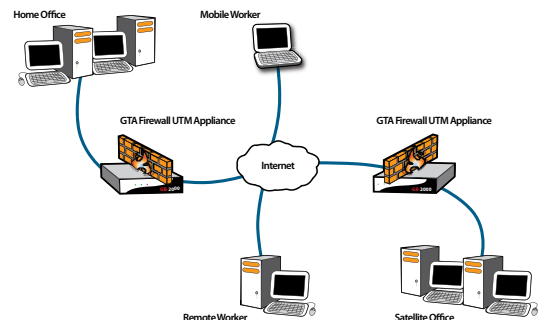
The GTA Mobile VPN Client comes standard with a multitude of settings that allow for a highly configurable VPN connection to allow remote users to securely access sensitive information stored on a network protected by a GTA Firewall UTM Appliance. IT administrators have the flexibility to configure the GTA Mobile VPN Client either through the easy-to-use wizard or opt for manual configuration for more advanced configurations. Access to the configuration panel can be controlled via password, to prevent unauthorized changes to the VPN configuration. The GTA Mobile VPN Client is installed on the user's workstation. For added security the configuration file can be pre-loaded onto a USB drive, which is then required for starting a VPN connection. This layer of security allows GTA Mobile VPN Client to be used in a variety of environments to provide a secure VPN connection. VPN tunnels can be initiated either manually or automatically at system startup.



A second layer of security is provided via authentication of users. Authentication may use Internet Key Exchange (IKE), certificate, or traditional methods. GTA provides client based authentication via the GBAuth applet. IKE is supported in main, quick and aggressive modes. Certificates from Microsoft, Netscape, Entrust, VeriSign and Baltimore Technologies are used with Simple Certificate Enrollment Protocol (SCEP).

The GTA Mobile VPN Client includes support for connectivity to networks that may require advanced handling of IP addresses such as NAT

Traversal. Network Address Translation Traversal (NAT-T) allows IPSec VPNs even through NAT devices such as firewalls. NAT-T circumvents problems that often arise when an IPSec Tunnel is used to connect to a network with network address translation.



'GB-OS', 'Surf Sentinel', 'Mail Sentinel' and 'GB-Ware' are registered trademarks of Global Technology Associates, Incorporated. 'GB Commander' is a trademark of Global Technology Associates, Incorporated. 'Global Technology Associates' and 'GTA' are service marks of Global Technology Associates, Incorporated. Features and specifications subject to change without notice.

Document ID: VPN200704-01

3505 Lake Lynda Drive, Suite 109
Orlando, FL 32817 USA

Tel: +1.407.380.0220

Web: www.gta.com