

GTA SSL Sentinel Browser

SSLBrowser201003-01



**Global
Technology
Associates, Inc.**

Global Technology Associates
3505 Lake Lynda Drive Suite 109
Orlando, FL 32817

Tel: +1.407.380.0220
Fax: +1.407.380.6080
Email: info@gta.com
Web: www.gta.com

Table of Contents

SSL Sentinel Browser	4
Requirements	4
Connecting to the SSL Sentinel Browser	4
SSL Sentinel Browser Interface	5
Bookmarks	5
Bookmarks Only	5
Bookmarks and Browser	5
Password Prompts	6
Using the Browser	6
URL Access	6
Web Browser Toolbar	6
File Browser Toolbar	7
Auto Logout	7
Logout	7

SSL Sentinel Browser

This section will assist users in connecting to the SSL Sentinel Browser and navigating the interface.

Requirements

- GB-OS version 5.3.0 or higher
- An IP Address assigned to the firewall External Interface, resolvable in DNS

Connecting to the SSL Sentinel Browser

To access the SSL Sentinel Browser, open a Web browser and enter the IP address or host name of the connecting firewall. If the browser is configured for a port other than 443, enter the host name or IP address followed by a colon and port number.

Example: `https://ssl.gta.com:1443`



Figure 1: URL

The Login screen for the SSL Sentinel Browser will display. Enter your user login credentials to access the browser. If the virtual keyboard force use is enabled, you will have to use the virtual keyboard to enter passwords. Use the shift key to access special characters.

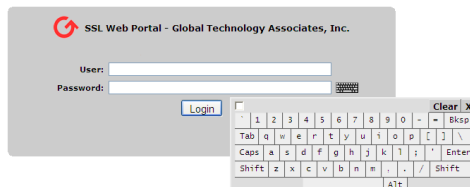


Figure 2: Login



Note

Administrators with SSL privileges logging in on the administration port will see the normal firewall administration interface and the SSL Sentinel Browser.



SSL Sentinel Browser Interface

There are two sections in the SSL Sentinel Browser interface:

1. **Browser** – Displays for all users allowed access. Allows for quick, and secure access to protected resources.
2. **Client** - Only displays for users who are allowed SSL Sentinel Client access.

Bookmarks

1. Labels are used to describe the group of bookmarks. Top level Labels are not clickable URL's and a Browser may have several Label and URL combinations.
2. There are four types of Bookmarks available
 - a. http
 - b. https
 - c. ftp
 - d. cifs (smb)
3. To access a URL, click on a LABEL link indicated by a bullet or icon.
Example:
 - Staff Site
 - FTP Server
4. Password protected sites will prompt a user for a password, in case of ftp and cifs, before connection is completed.

Bookmarks Only

1. A user with Bookmarks Only access will only have access to predefined URL's.
2. Access to an undefined URL will be denied. A user should contact their firewall administrator for access to undefined URLs.

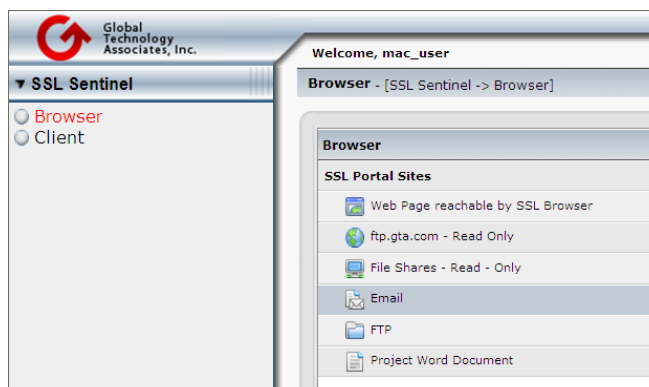


Figure 3: Browser access only

Bookmarks and Browser

1. Users have the same access rights as a Bookmark Only user, with the addition of a Browser bar.
2. The Browser Bar allows users to enter URLs that are not predefined by selecting the Protocol (http, https, ftp, or cifs) and entering the URL.

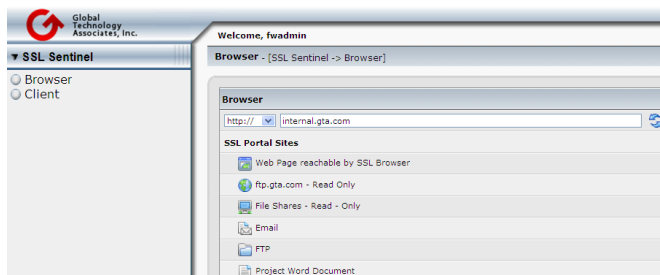


Figure 4: Bookmarks and Browser access

Password Prompts

Links to URLs requiring a password such as a ftp server, file shares, or basic authentication will prompt users for a login.

1. Example of a FTP server login. The virtual keyboard is available for password entry.

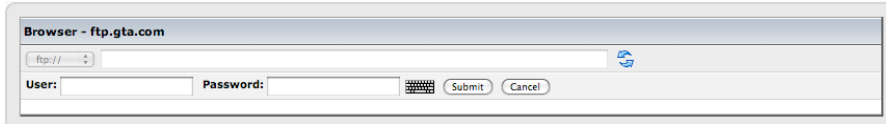


Figure 5: Login Prompt

2. Example of Outlook Web Access – Basic Authentication login window:

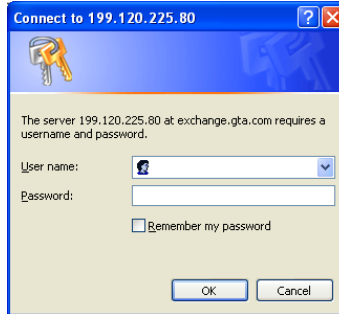


Figure 6: OWA Login

Using the Browser

URL Access

URL's are accessed via predefined links or by entering the URL directly in the browser bar as shown below. Enter a URL and click on the refresh icon to open the URL.

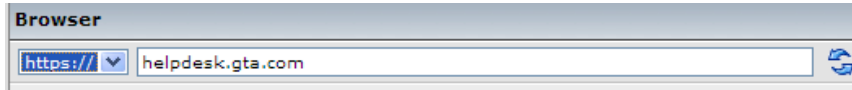


Figure 5: URL Browser Bar

Web Browser Toolbar

Navigation and http and https use is accomplished using the SSL Sentinel Browser toolbar. The SSL Sentinel Browser toolbar allows for quick and convenient access to bookmarks, the SSL Sentinel page and for closing the client.



Figure 6: SSL Sentinel Browser Toolbar

1. **Move** - Allows the user to move the toolbar to the upper left, middle or upper right of their browser.
2. **Bookmarks** - Allows quick access to configured bookmarks.
3. **Home** - Returns the user to the SSL Sentinel Browser page.
4. **Close** - Close browser session.
5. **Minimize/Maximize** - Allows the user to minimize or maximize the SSL Sentinel toolbar.






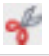


File Browser Toolbar

The file browser toolbar will display differently based on user group permissions and protocol. It will only display when the protocol is ftp(s) or cifs (smb).

- Select a folder to browse it's contents.
- To rename a folder, select the edit icon beside the folder. A dialog box will appear.
- To download a file, select and double-click the file.



Figure 7: File Browser Toolbar

Table 1: File Browser Toolbar					
Icon	Value	Description	Shares/SMB (cifs)	FTP	Read Only
	Up	Move up one directory level.	Yes	Yes	Yes
	Bookmarks	Return browser to SSL Sentinel Browser page.	Yes	Yes	Yes
	New Folder	Creates a new folder.	Yes	Yes	No
	Delete	Deletes selected folder(s). To select multiple files or folder select the check mark next to the file or folder. Note: Folders cannot be deleted unless the contents of the folder are empty.	Yes	Yes	No
	Copy	Copies a file or folder.	Yes	No	No
	Cut	Cuts a file or folder.	Yes	No	No
	Paste	Pastes the object of a copy or cut.	Yes	No	No
	Upload	Upload a file.	Yes	Yes	No

Auto Logout

When a browser has been inactive for a specified period of time, the user will be automatically logged out. A prompt will allow the user to remain logged in. If the idle period is too low, contact your firewall administrator to increase this time period.

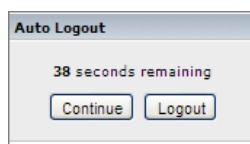


Figure 8: Auto logout

Logout

When logging out, it is recommended that you use the logout option and clear the cache on any untrusted hosts. The SSL Sentinel Browser will attempt to clear cache if the log out button is used.



Figure 9: Logout

Copyright

© 1996-2010, Global Technology Associates, Incorporated (GTA). All rights reserved.

Except as permitted under copyright law, no part of this manual may be reproduced or distributed in any form or by any means without the prior permission of Global Technology Associates, Incorporated.

Technical Support

GTA includes 30 days “up and running” installation support from the date of purchase. See GTA’s Web site for more information. GTA’s direct customers in the USA should call or email GTA using the telephone and email address below. International customers should contact a local Authorized GTA Channel Partner.

Tel: +1.407.380.0220 Email: support@gta.com

Disclaimer

Neither GTA, nor its distributors and dealers, make any warranties or representations, either expressed or implied, as to the software and documentation, including without limitation, the condition of software and implied warranties of its merchantability or fitness for a particular purpose. GTA shall not be liable for any lost profits or for any direct, indirect, incidental, consequential or other damages suffered by licensee or others resulting from the use of the program or arising out of any breach of warranty. GTA further reserves the right to make changes to the specifications of the program and contents of the manual without obligation to notify any person or organization of such changes.

Mention of third-party products is for informational purposes only and constitutes neither an endorsement nor a recommendation for their use. GTA assumes no responsibility with regard to the performance or use of these products.

Every effort has been made to ensure that the information in this manual is accurate. GTA is not responsible for printing or clerical errors.

Trademarks & Copyrights

GB-OS, Surf Sentinel, Mail Sentinel and GB-Ware are registered trademarks of Global Technology Associates, Incorporated. GB Commander is a trademark of Global Technology Associates, Incorporated. Global Technology Associates and GTA are service marks of Global Technology Associates, Incorporated.

Microsoft, Internet Explorer, Microsoft SQL and Windows are either trademarks or registered trademarks of Microsoft Corporation in the United States and/or other countries.

Adobe and Adobe Acrobat Reader are either registered trademarks or trademarks of Adobe Systems Incorporated in the United States and/or other countries.

UNIX is a registered trademark of The Open Group.

Linux is a registered trademark of Linus Torvalds.

BIND is a trademark of the Internet Systems Consortium, Incorporated and University of California, Berkeley.

WELF and WebTrends are trademarks of NetIQ.

Sun, Sun Microsystems, Solaris and Java are trademarks or registered trademarks of Sun Microsystems, Inc. in the United States and/or other countries.

Java software may include software licensed from RSA Security, Inc.

Some products contain software licensed from IBM are available at <http://oss.software.ibm.com/icu4j/>.

Some products include software developed by the OpenSSL Project (<http://www.openssl.org/>).

Mailshell and Mailshell Anti-Spam is a trademark of Mailshell Incorporated. Some products contain technology licensed from Mailshell Incorporated.

All other products are trademarks of their respective companies.

Global Technology Associates, Inc.

3505 Lake Lynda Drive, Suite 109 • Orlando, FL 32817 USA

Tel: +1.407.380.0220 • Fax: +1.407.380.6080 • Web: <http://www.gta.com> • Email: info@gta.com