

Installing the IPSecuritas IPSec Client

IPSecuritasMac201003-01



**Global
Technology
Associates, Inc.**

Global Technology Associates
3505 Lake Lynda Drive Suite 109
Orlando, FL 32817

Tel: +1.407.380.0220
Fax: +1.407.380.6080
Email: info@gta.com
Web: www.gta.com



Installing the IPSecuritas IPsec Client: Mac

This section will assist users in the download, installation, and configuration of the IPSecuritas IPsec Client.

Requirements

- GB-OS 5.3.1 or higher
- IPSecuritas IPsec Client 3.4 or above
- User access permissions for Remote Access to a GTA Firewall
- User Configured to use Hybrid + Xauth
- The host name or an IP Address assigned to the firewall's External Interface
- Downloaded client and firewall CA files. All required files may be downloaded via the firewall Web interface.

Important - Downloads for MAC clients only support Hybrid+Xauth mode and CA file downloads.

Accessing the GTA Remote Access Portal for Download

To access the GTA Remote Access Portal, open a Web browser and enter the IP address or host name of your firewall. If the firewall's remote access portal is configured for a port other than 443, append with a colon and port number.

Example: <https://remote-access.gta.com:1443>

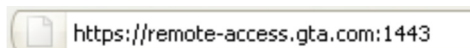


Figure 1: Location Bar with Non Standard Port

The login screen for the GTA Remote Access Portal will display. Enter your user login credentials to access the browser. If the virtual keyboard is required, you will have to use the virtual keyboard to enter your password. Use the shift key to access special characters.

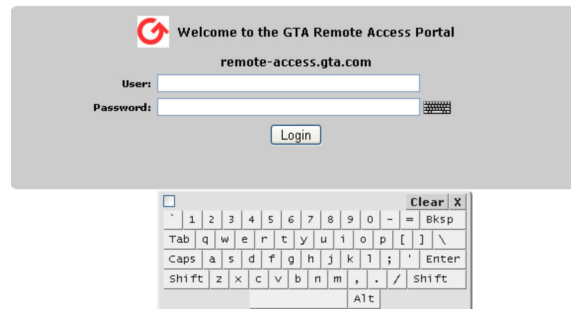


Figure 2: Remote Access Login



Note

Administrators with Remote Access privileges logging in on the administration port will see the normal firewall administration interface and the Remote Access Portal.

Downloading the IPsec Configuration Files and Installers

1. Navigate to **Remote Access>IPsec>Client** for all files needed for download.
2. Click on the **CLIENT INSTALLER DOWNLOAD**. This will download the client.
3. Click on the **CA CERTIFICATE DOWNLOAD** to download the ZIP file containing the required certificates and configuration file.

Mac OS X		
Client Installer	IPsec Client Installer.	Download
CA Certificate	Export the CA certificate in PEM format	Download
Installation Guide	The installation guide contains instructions on how to install and configure the IPsec Client.	Download

Figure 3: Mac Installer, CA Certificate and Installation Guide



IPSec Client Installation

1. Download the Mac OS X Client Installer.
2. The License Agreement will display. Click **AGREE** to continue with installation.

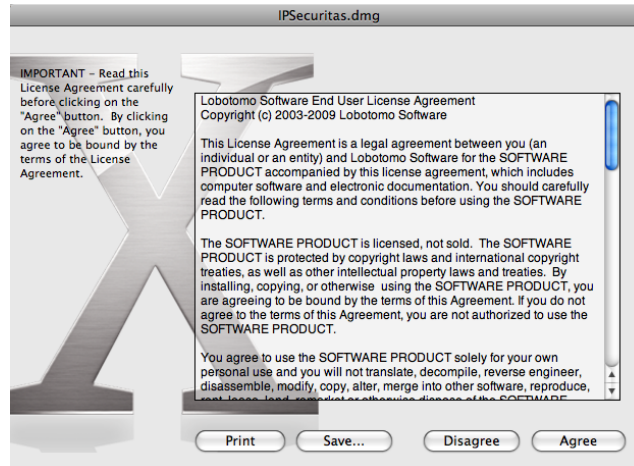


Figure 4: IPSecuritas License Agreement

3. Once the installer has been mounted, drag the IPSecuritas application into your system's application folder.



Figure 5: Install IPSecuritas

IPSec Client Configuration – Hybrid + XAuth (Hybrid RSA)

1. Open IPSecuritas (Certificate Manager) and import the previously downloaded firewall CA.

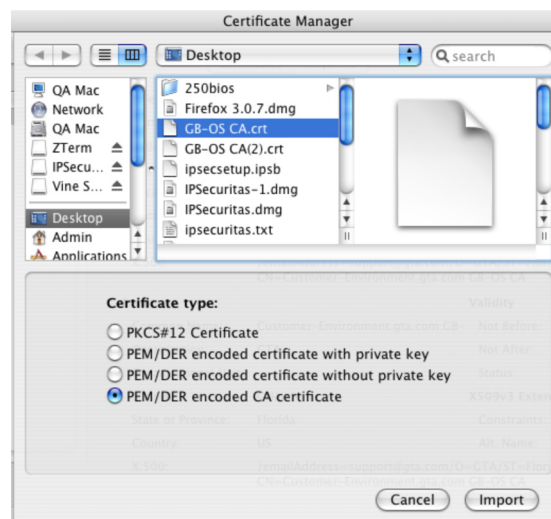


Figure 6: Import the Firewall CA



- Next, open the Connections Editor (**Connections -> Edit Connections**) and insert a new connection by clicking the + icon.



Figure 7: Insert a New Connection

- Name the new connection and then select ID Tab. Set the following:
 - Local Identifier: Address
 - Remote Identifier: Address
 - Authentication Method: Hybrid RSA
 - Certificate: Select the firewall CA certificate
 - Username: Enter Username
 - Store Password: Optional

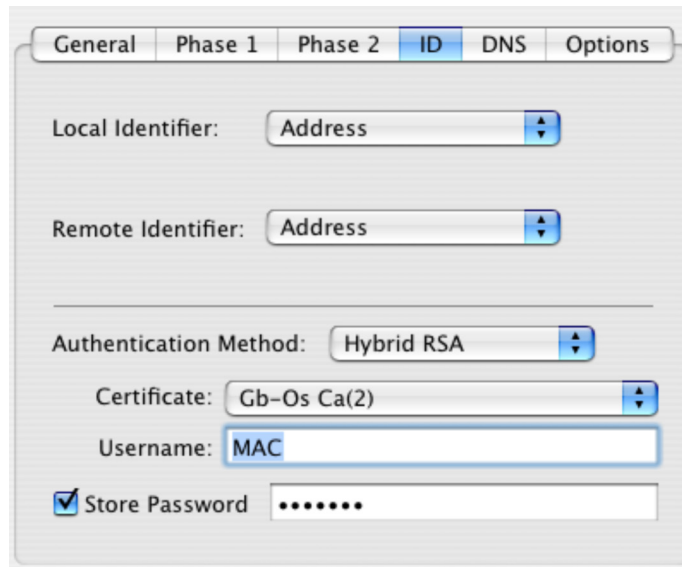


Figure 8: ID Tab Settings

- Select the Options Tab and set the options as shown below.

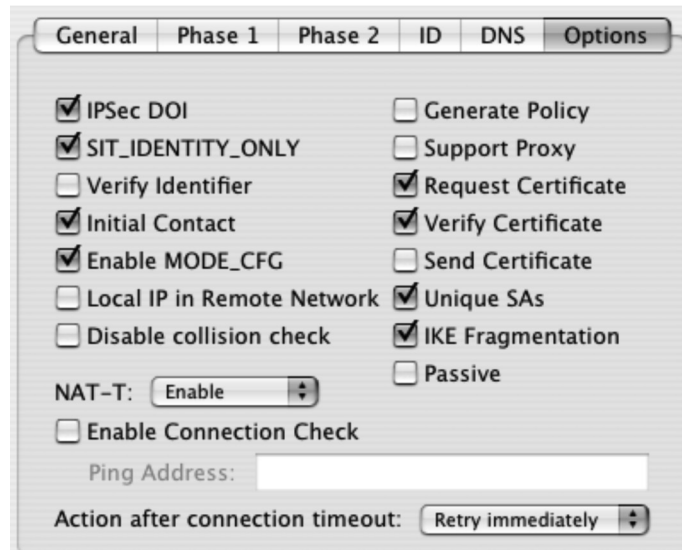


Figure 9: Options Tab Settings



5. Select the General Tab and enter the following:
 - Remote IPSec Device – Firewall IP address or fully qualified host name.
 - Endpoint Mode: Should be greyed out and set to Mode_CFG is enabled.
 - Endpoint Mode: Network(s) and enter network IP address behind the remote GTA Firewall.

The screenshot shows the 'General' tab of the IPSec Client configuration window. The 'Remote IPSec Device' field contains the IP address '199.120.225.80'. Below it, the 'Local Side' section has an 'Endpoint Mode' dropdown set to 'Host' and a checkbox for 'Prefer IPv6 Address' which is unchecked. A note states 'MODE_CFG is enabled. Local address will be queried from firewall.' The 'Remote Side' section has an 'Endpoint Mode' dropdown set to 'Network' and a 'Network Address' field containing '192.168.71.0'. Below that, the 'Network Mask (CIDR)' field contains the value '24'.

Figure 10: General Tab Settings

6. Select the Phase 1 Tab and enter the following:
 - Lifetime – Equal to or less than configured lifetime on the firewall in minutes.
 - DH Group – Group configured for Phase 1 of the firewall.
 - Encryption – Match phase 1 encryption on the firewall.
 - Authentication – Match the the firewall Phase 1 encryption.
 - Mode – Aggressive
 - Proposal – Obey

The screenshot shows the 'Phase 1' tab of the IPSec Client configuration window. The 'Lifetime' is set to '90' with a unit dropdown set to 'Minutes'. The 'DH Group' is set to '1024 (2)'. The 'Encryption' is set to 'AES 192'. The 'Authentication' is set to 'SHA-1'. The 'Exchange Mode' is set to 'Aggressive'. The 'Proposal Check' is set to 'Obey'. The 'Nonce Size' is set to '16'.

Figure 11: Phase 1 Tab Settings



7. Select the Phase 2 Tab and enter the following:
 - Lifetime: Less than or equal to the firewall phase 2 lifetime.
 - PFS Group: same as the firewalls phase 2 Key Group.
 - Encryption – Match phase 2 encryption on the firewall.
 - Authentication – Match the the firewall Phase 2 encryption.

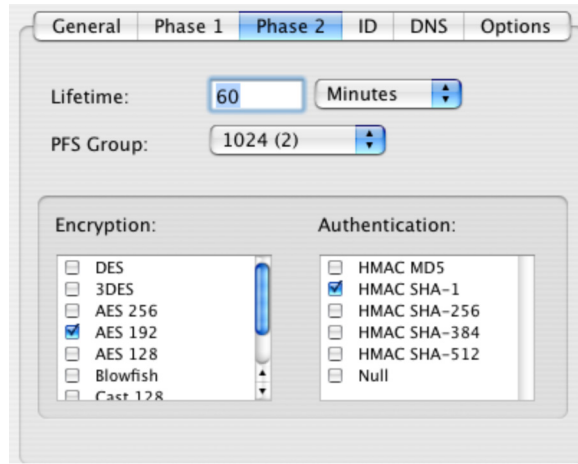


Figure 12: Phase 2 Tab Settings

8. Optionally, select the DNS Tab and configure DNS servers used while VPN is active.

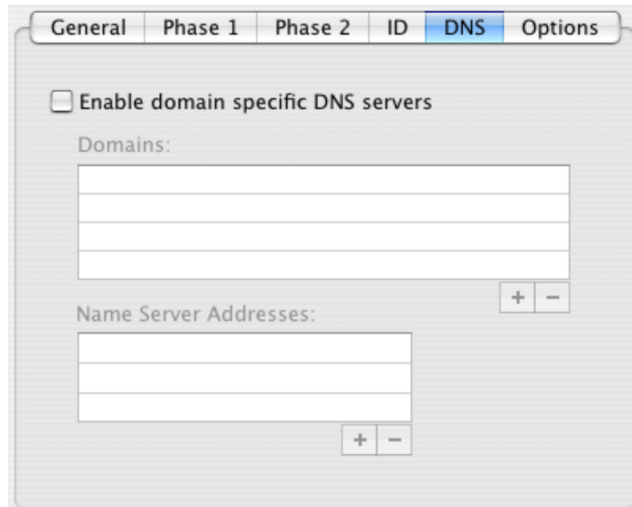


Figure 13: DNS Tab



Connecting to the Firewall

1. Open IPSecuritas and select your connection profile and click **START**. Once connected to the remote GTA Firewall, a GREEN dot will appear beside the connection.
2. To close the connection click **STOP**.



Figure 14: Start Connection



Figure 15: Stop Connection



Lobotomo Software End User License Agreement

This License Agreement is a legal agreement between you (an individual or an entity) and Lobotomo Software for the SOFTWARE PRODUCT accompanied by this license agreement, which includes computer software and electronic documentation. You should carefully read the following terms and conditions before using the SOFTWARE PRODUCT.

The SOFTWARE PRODUCT is licensed, not sold. The SOFTWARE PRODUCT is protected by copyright laws and international copyright treaties, as well as other intellectual property laws and treaties. By installing, copying, or otherwise using the SOFTWARE PRODUCT, you are agreeing to be bound by the terms of this Agreement. If you do not agree to the terms of this Agreement, you are not authorized to use the SOFTWARE PRODUCT.

You agree to use the SOFTWARE PRODUCT solely for your own personal use and you will not translate, decompile, reverse engineer, disassemble, modify, copy, alter, merge into other software, reproduce, rent, lease, lend, remarket or otherwise dispose of the SOFTWARE PRODUCT or any part thereof.

The SOFTWARE PRODUCT may be freely copied and distributed, provided that the SOFTWARE PRODUCT is not modified in any way, and it is accompanied by this License Agreement. It may not, however, be bundled or sold for profit without permission from Lobotomo Software.

Lobotomo Software reserves the right and the sole discretion to (i) make improvements, corrections, adaptations, conversions and/or any other change in the SOFTWARE PRODUCT and/or the Lobotomo Software web site and to any part thereof and/or to a revised or new Terms of Service; (ii) change, limit, terminate or cease to provide, at any time, temporarily permanently, without prior notice, for any reason or no reason, to all users or any number thereof (a) the SOFTWARE PRODUCT and its availability and functionality, part or all of the Lobotomo Software web site, (b) the access to the SOFTWARE PRODUCT, granted to you or to any other user; (iii) establish new operating and usage policies for the SOFTWARE PRODUCT or change them at any time temporarily or permanently without prior notice, for any reason or no reason.

DISCLAIMER

YOU EXPRESSLY AGREE THAT DOWNLOADING THE SOFTWARE PRODUCT AND ANY USE OF THE SOFTWARE PRODUCT IS AT YOUR OWN RISK. NO WARRANTY, REPRESENTATION, CONDITION, UNDERTAKING OR TERM - EXPRESS OR IMPLIED, STATUTORY OR OTHERWISE - INCLUDING BUT NOT LIMITED TO THE CONDITION, QUALITY, DURABILITY, PERFORMANCE, ACCURACY, STABILITY, RELIABILITY, NON-INFRINGEMENT, MERCHANTABILITY, OR FITNESS FOR A PARTICULAR PURPOSE OR USE OF THE SOFTWARE PRODUCT IS GIVEN OR ASSUMED BY LOBOTOMO SOFTWARE. ALL SUCH WARRANTIES, REPRESENTATIONS, CONDITIONS, UNDERTAKINGS AND TERMS ARE HEREBY EXCLUDED. LOBOTOMO SOFTWARE MAKES NO WARRANTY THAT THE SOFTWARE PRODUCT WILL MEET YOUR REQUIREMENTS, OR THAT IT WILL BE UNINTERRUPTED, TIMELY, SECURE, OR ERROR FREE; IN NO EVENT SHALL LOBOTOMO SOFTWARE PRODUCT BE LIABLE TO ANY PARTY FOR ANY DAMAGES INCLUDING WITHOUT LIMITATION, ANY DIRECT, INDIRECT, SPECIAL, PUNITIVE, INCIDENTAL OR CONSEQUENTIAL DAMAGES (INCLUDING, BUT NOT LIMITED TO, DAMAGES FOR LOSS OF BUSINESS PROFITS, BUSINESS INTERRUPTION, LOSS OF PROGRAMS OR INFORMATION, LOSS OF PROFITS AND SAVINGS AND THE LIKE), OR ANY OTHER DAMAGES ARISING - IN ANY WAY, SHAPE OR FORM - OUT OF THE AVAILABILITY, USE, RELIANCE ON, INABILITY TO UTILIZE OR IMPROPER USE OF THE SOFTWARE PRODUCT EVEN IF LOBOTOMO SOFTWARE SHALL HAVE BEEN ADVISED OF THE POSSIBILITY OF SUCH DAMAGES, AND REGARDLESS OF THE FORM OF ACTION, WHETHER IN CONTRACT, TORT, OR OTHERWISE. BECAUSE SOME JURISDICTIONS DO NOT ALLOW THE EXCLUSION OR LIMITATION OF INCIDENTAL OR CONSEQUENTIAL DAMAGES, THE ABOVE EXCLUSIONS OF INCIDENTAL AND CONSEQUENTIAL DAMAGES MAY NOT APPLY TO YOU.



Copyright

© 1996-2010, Global Technology Associates, Incorporated (GTA). All rights reserved.

Except as permitted under copyright law, no part of this manual may be reproduced or distributed in any form or by any means without the prior permission of Global Technology Associates, Incorporated.

Technical Support

GTA includes 30 days “up and running” installation support from the date of purchase. See GTA's Web site for more information.

GTA's direct customers in the USA should call or email GTA using the telephone and email address below. International customers should contact a local Authorized GTA Channel Partner.

Tel: +1.407.380.0220 Email: support@gta.com

Disclaimer

Neither GTA, nor its distributors and dealers, make any warranties or representations, either expressed or implied, as to the software and documentation, including without limitation, the condition of software and implied warranties of its merchantability or fitness for a particular purpose. GTA shall not be liable for any lost profits or for any direct, indirect, incidental, consequential or other damages suffered by licensee or others resulting from the use of the program or arising out of any breach of warranty. GTA further reserves the right to make changes to the specifications of the program and contents of the manual without obligation to notify any person or organization of such changes.

Mention of third-party products is for informational purposes only and constitutes neither an endorsement nor a recommendation for their use. GTA assumes no responsibility with regard to the performance or use of these products.

Every effort has been made to ensure that the information in this manual is accurate. GTA is not responsible for printing or clerical errors.

Trademarks & Copyrights

GB-OS, Surf Sentinel, Mail Sentinel and GB-Ware are registered trademarks of Global Technology Associates, Incorporated. GB Commander is a trademark of Global Technology Associates, Incorporated. Global Technology Associates and GTA are service marks of Global Technology Associates, Incorporated.

Microsoft, Internet Explorer, Microsoft SQL and Windows are either trademarks or registered trademarks of Microsoft Corporation in the United States and/or other countries.

Adobe and Adobe Acrobat Reader are either registered trademarks or trademarks of Adobe Systems Incorporated in the United States and/or other countries.

UNIX is a registered trademark of The Open Group.

Linux is a registered trademark of Linus Torvalds.

BIND is a trademark of the Internet Systems Consortium, Incorporated and University of California, Berkeley.

WELF and WebTrends are trademarks of NetIQ.

Sun, Sun Microsystems, Solaris and Java are trademarks or registered trademarks of Sun Microsystems, Inc. in the United States and/or other countries.

Java software may include software licensed from RSA Security, Inc.

Some products contain software licensed from IBM are available at <http://oss.software.ibm.com/icu4j/>.

Some products include software developed by the OpenSSL Project (<http://www.openssl.org/>).

Mailshell and Mailshell Anti-Spam is a trademark of Mailshell Incorporated. Some products contain technology licensed from Mailshell Incorporated.

All other products are trademarks of their respective companies.

Global Technology Associates, Inc.

3505 Lake Lynda Drive, Suite 109 • Orlando, FL 32817 USA

Tel: +1.407.380.0220 • Fax: +1.407.380.6080 • Web: <http://www.gta.com> • Email: info@gta.com