

Registration Worksheet

The following is required to register your product in the GTA Online Support Center (<http://www.gta.com/support/center>).

Serial Number	Activation Code
<input type="text"/>	<input type="text"/>
GTA Online Support Center User Name	
<input type="text"/>	
Company Name	Company Contact
<input type="text"/>	<input type="text"/>
Optional Features	
<input type="checkbox"/> Mail Sentinel	<input type="checkbox"/> Surf Sentinel
<input type="checkbox"/> H2A - High Availability	<input type="checkbox"/> GTA Mobile VPN Client Licenses
<input type="checkbox"/> Multi-Interface Option	<input type="checkbox"/> Support Contract(s)



1 Materials

Verify your package contents. Gather any additional supplies that may be necessary for setup.

You will need:

- One (1) GTA Firewall UTM Appliance
- One (1) power cable/adaptor
- One (1) crossover Ethernet cable
- Serial number and activation code(s)
- Your network's configuration settings, including:
 - Gateways
 - IP addresses
 - DNS servers
- A pen or pencil

2 Planning

Review what security role you wish your GTA Firewall UTM Appliance to play in your network. Appropriate placement is important to best perform this role.

Will your firewall protect your network from the Internet? Will it serve as an additional security layer, sectioning off your internal network? Depending on your answer, your firewall may be directly attached to your Internet router or not.

Consider the arrangement of your network, and where your firewall can provide the greatest benefit. Two common firewall arrangements are illustrated on the right. Networking reference books may provide additional arrangement suggestions.

Keep the final location of your firewall in mind as you add its network settings into the Basic Setup Wizard. It may affect firewall settings such as subnet mask, IP address, bridged interfaces and DHCP. Record your settings in the Basic Setup Wizard Worksheet provided on the opposite side of this Quick Guide.

3 Registration

Registration is an important part of your firewall's setup process. Registration allows you to download software updates and to receive technical support and service for your GTA Firewall UTM Appliance. Record registration information on the Registration Worksheet provided above.

To register your GTA Firewall UTM Appliance with GTA, visit the GTA Online Support Center at www.gta.com/support/center. If you do not yet have an account with the support center, create one so you can log in.

When you have logged into the GTA Online Support Center, select the Register a Product link and enter the GTA Firewall UTM Appliance's serial number and activation code (which were included with your product's packaging).

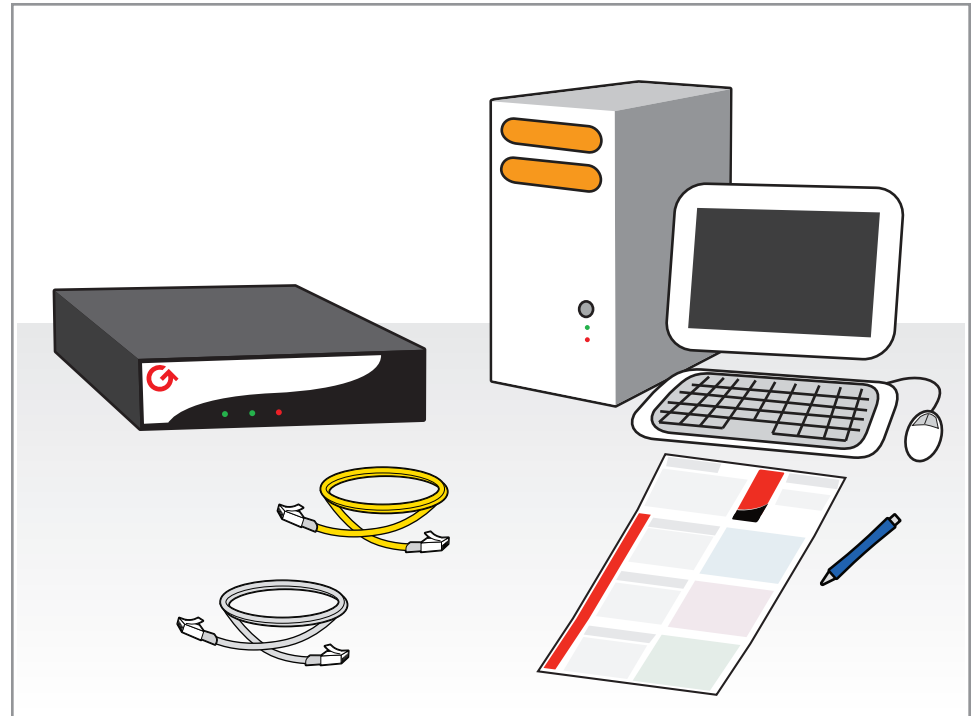
Retrieve feature activation codes for any optional features you may have purchased. The GTA Online Support Center stores current activation codes for registered products in the event they are misplaced.

Quick Guide

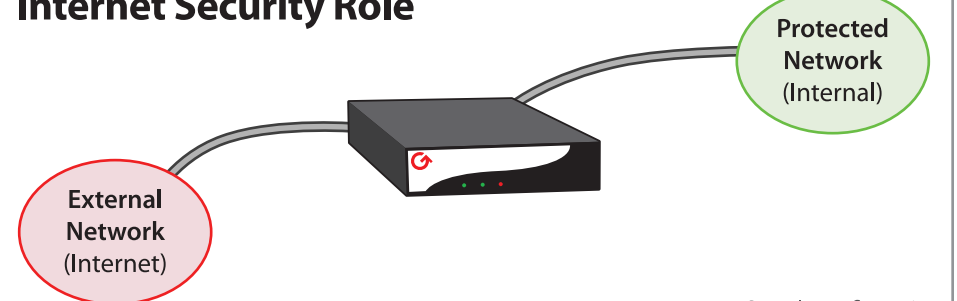
How to Install and Configure Your New GTA Firewall UTM Appliance



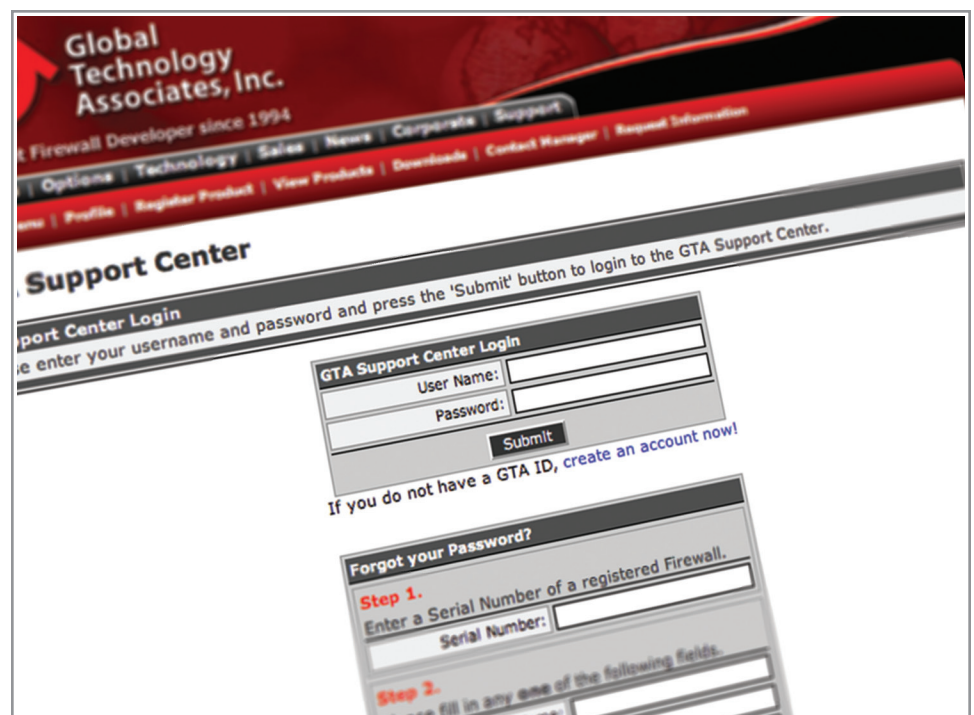
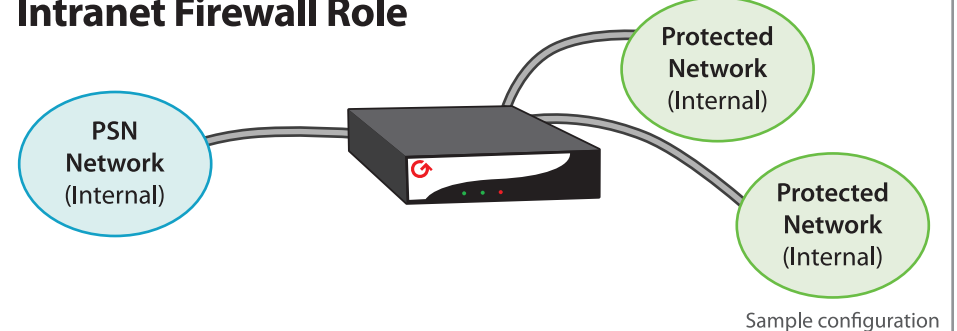
GB-OS
5.3



Internet Security Role



Intranet Firewall Role



Technical Support

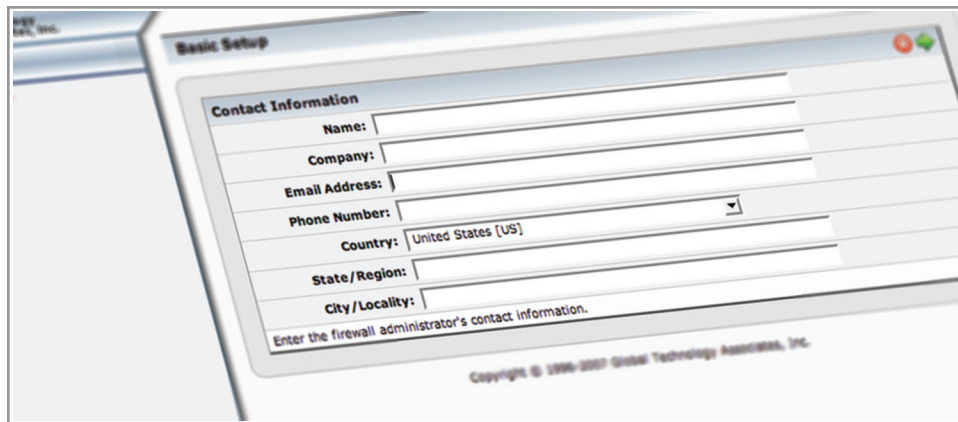
Installation ("up and running") support is available to original owners who have registered their product in the GTA Online Support Center. If you need installation assistance during the first 30 days of ownership, contact the GTA Support team by emailing support@gta.com. Be sure to include your product name, serial number, activation code, feature activation code numbers for your optional/subscription features and if possible a Configuration Report.

Installation support only covers installation and default configuration of the firewall. For further assistance, contact an authorized GTA Channel Partner or GTA Sales staff for information about support offerings.

Basic Setup Wizard Worksheet

The following is required to complete the Basic Setup Wizard.

Serial Number	Activation Code
<input type="text"/>	<input type="text"/>
Host Name	Network Time Protocol Server (Optional)
<input type="text"/>	<input type="text"/>
Protected Interface Type	Protected Interface IP Address (Static Only)
<input type="checkbox"/> Static <input type="checkbox"/> DHCP	<input type="text"/>
External Interface Type	External Interface IP Address (Static Only)
<input type="checkbox"/> Static <input type="checkbox"/> DHCP <input type="checkbox"/> PPP	<input type="text"/>
PSN Interface Type (Optional)	PSN Interface IP Address (Static Only)
<input type="checkbox"/> Static <input type="checkbox"/> DHCP	<input type="text"/>



4 Setup

Your firewall has restrictive factory default settings to promote network security - even during setup.

To integrate your firewall with your network:

1. Connect your firewall's NIC 0 directly to your computer with a crossover Ethernet cable. Power both devices on.
2. Temporarily change your computer's network settings to allow connection with the firewall by entering the following settings:

IP Address:	192.168.71.253
Gateway:	192.168.71.254
Subnet Mask:	255.255.255.0
DNS:	none (or 192.168.71.254, if required)

3. Reboot if necessary to apply the new network settings.

4. With a browser, enter <https://192.168.71.254>, accept the SSL certificate, and enter the default user ID of **fwadmin** and password of **fwadmin**. You will be prompted with the Basic Setup Wizard. Enter settings using the Basic Setup Wizard Worksheet. Click Save to apply.
5. Remove the temporary connection between your computer and the firewall. Move the firewall to its intended place on the network.
6. Restore the original network settings and connection to your computer.

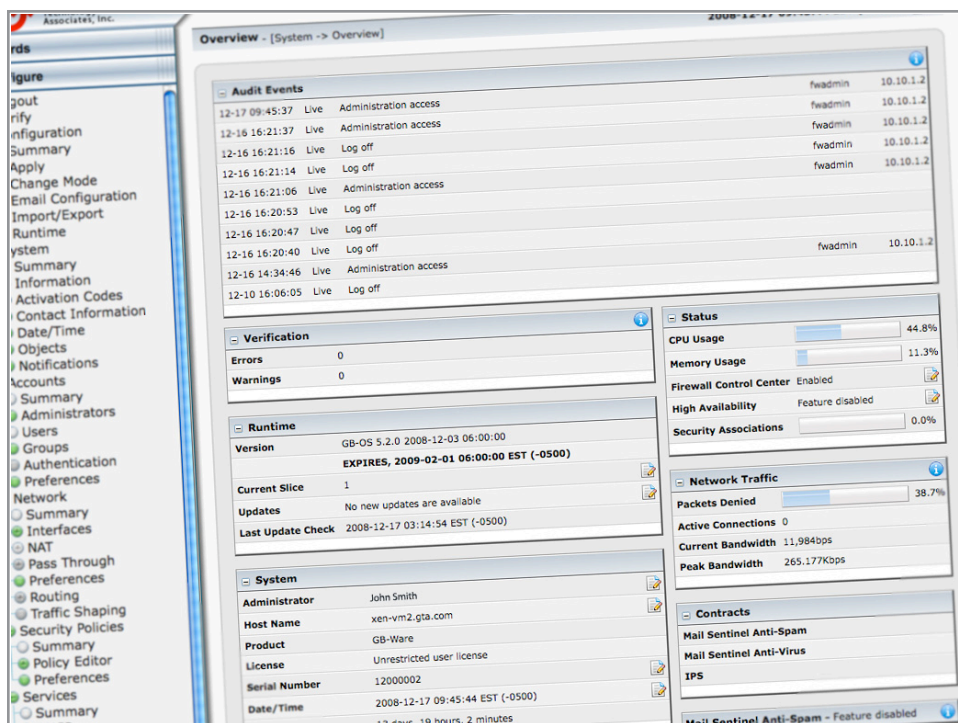
5 Remote Administration

You should now be able to remotely administer your firewall. GTA Firewall UTM Appliances may be administered using a frames-capable, SSL-enabled web browser.

To administer your firewall remotely, enter the firewall's new IP address in your browser, prefixed with "https://".

Again enter the default user ID and password to log in. If you have not done so already, change your firewall's administrative password. It is **very important** to choose a strong password, containing a long, random mixture of letters and numbers that cannot be guessed.

Depending on your firewall's role on your network, you may wish to enable services such as VPN, DHCP or DNS Proxy, DNS Server, IPS, Mail Sentinel email proxy, Surf Sentinel content filtering or optional features. For more information on these firewall services, see the *GB-OS User's Guide*.



6 Additional Options

GTA Firewall UTM Appliances can expand their functionality with the use of additional hardware, software and subscription services. See your firewall's product specifications to see which services are available to help protect your network.

Transformed by these options, your firewall can become your total network security solution.

- Surf Sentinel subscription for web content filtering
- Mail Sentinel subscriptions for email spam and virus filtering
- H2A - High Availability to link firewall failovers
- Network Interface Expansion cards for more interfaces
- Additional Mobile VPN client licenses for more VPN users
- Multi-interface Option for up to 20 interfaces on GB-Ware
- Support Contracts

