

## How to Install Your New GTA Firewall and Enter Basic Network Settings

Copyright 2004 Global Technologies, Inc. All rights reserved.  
[www.gta.com](http://www.gta.com)  
 Trademarks / registered trademarks held by their respective owners.

Host (domain) name: \_\_\_\_\_

	Factory Default	Your Settings
IP address (ext.):	0.0.0.0/0*	_____
DHCP (ext.):	yes	_____
IP address (prot.):	192.168.71.254/24*	_____
Gateway:	0.0.0.0	_____
DNS (name) server:	none	_____
DNS Proxy:	disabled	_____

\* The IP address field includes the subnet mask. /24 is CIDR notation for a 24-bit subnet mask (255.255.255.0). For more information on CIDR and subnet mask notations, see the *GNAT Box System Software User's Guide*.

# 1

## Materials

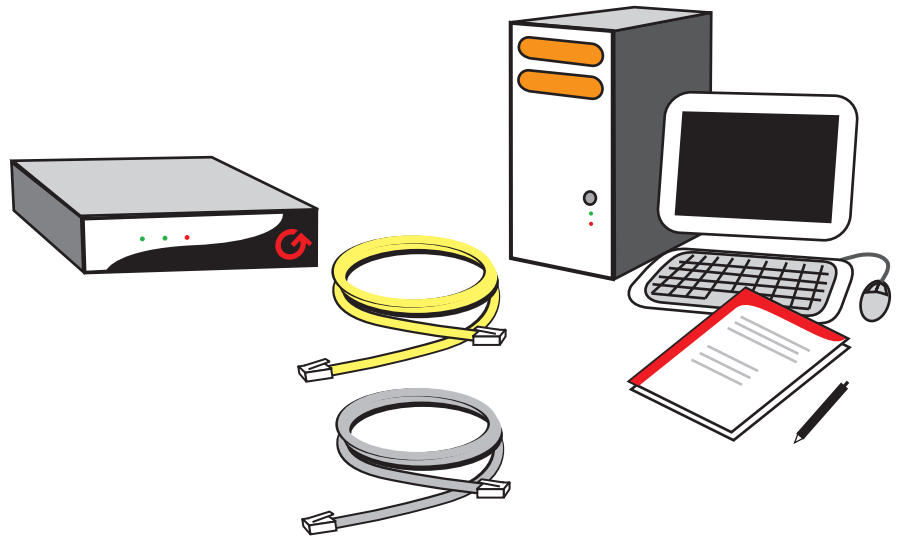
Verify your firewall's package contents. Gather any additional supplies that may be necessary for setup.

### You will need:

- 1 GTA firewall with power cable/adaptor
- 1 computer with an Ethernet network card and web browser
- 1 crossover Ethernet cable
- your GTA firewall's serial number and activation code
- your network configuration, including gateways, subnet masks, IP addresses, and DNS servers (this information may come from your Internet service provider (ISP))
- a pen or pencil

### Additionally, you may need:

- more crossover and/or straight-through Ethernet cables (depending on what other network devices you wish to attach to your installed firewall)
- any feature activation codes (only if you have purchased additional options for your firewall)



# 2

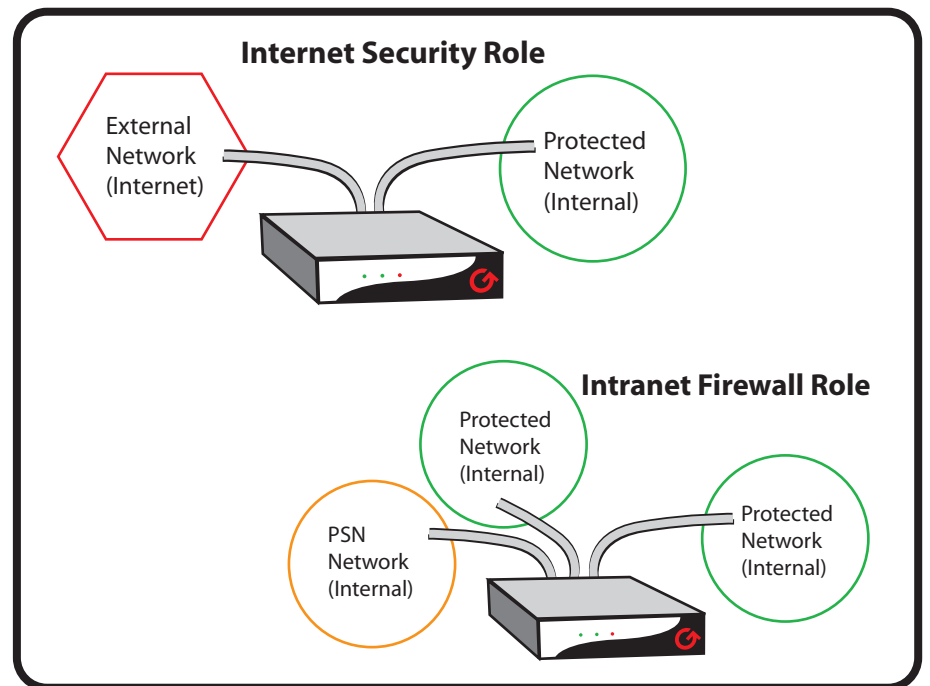
## Planning

Review what security role you wish your firewall to play in your network. Appropriate placement is important to best perform this role.

Will your firewall protect your network from the Internet? Will it serve as an additional security layer, sectioning off your internal network? Depending on your answer, your firewall may be directly attached to your Internet router or not.

Consider the arrangement of your network, and where your firewall can provide the greatest benefit. Two common firewall arrangements are pictured. Networking reference books may provide additional arrangement suggestions.

Keep the final location of your firewall in mind as you add its network settings. It may effect firewall settings such as subnet mask, IP address, bridged interfaces and DHCP. Record your settings in the DNS & Network Information Worksheet section for setup use.



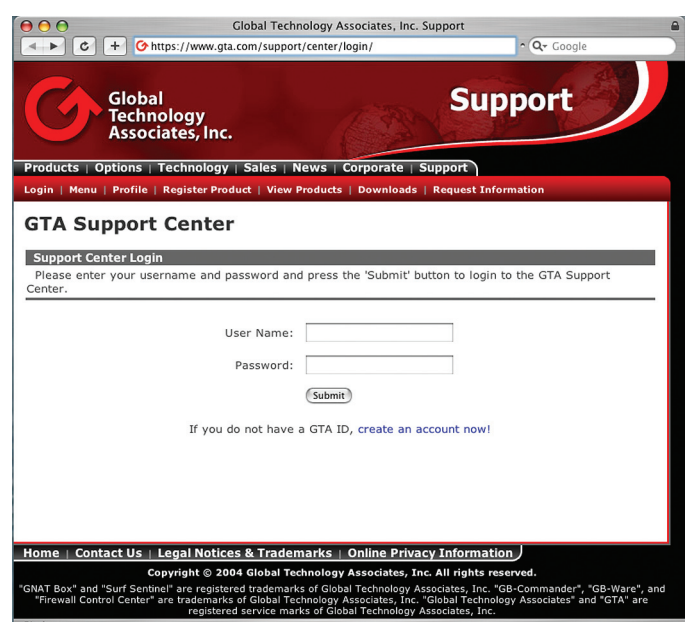
# 3

## Registration

Registration is an important part of your firewall's setup process. It allows you to download software updates and receive technical support and service for your firewall. Record registration information on the Registration Worksheet section.

To register your firewall, visit GTA's online support center at GTA's web site, [www.gta.com/support/center/login/](http://www.gta.com/support/center/login/). If you do not yet have an online support center login, create an account. (GTA recommends this account for the firewall owner, not contracted IT service consultants.) When you have an account with GTA's online support center, log in. Click the link to "Register a product" and enter the serial number and activation code of your firewall. (The serial number and activation code should be included in the firewall's package.)

Retrieve feature activation codes for any optional features you may have purchased. The GTA online support center stores current activation codes for your registered products so you may retrieve them if your other records are lost.



**Technical Support**

Up-and-running support, as well as annual contract and per-incident support, is available. Support offerings may vary with locale. Ask your GTA Channel Partner or GTA Sales about technical support offerings available in your area.

**Tel.:** +1.407.380.0220  
**Email:** support@gta.com  
**Web:** www.gta.com/support/

Firewall serial number: \_\_\_\_\_

Firewall activation code: \_\_\_\_\_

GTA online support center login: \_\_\_\_\_

**Registered to:**  
 Company: \_\_\_\_\_

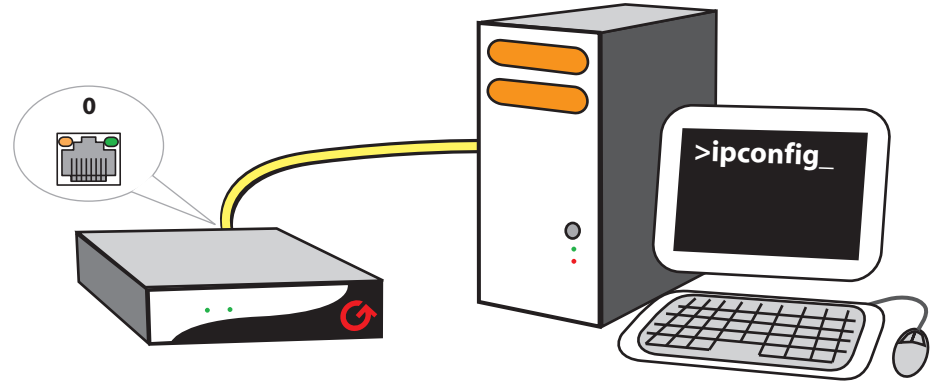
First & Last Name: \_\_\_\_\_

Optional features: \_\_\_\_\_

# 4 Setup

Your firewall has restrictive factory default settings to promote security - even during setup.

To integrate your firewall with your network, physically connect your computer to your firewall, access it using the firewall's default IP, and add your network settings to the firewall before moving the firewall to its intended place on your network.



1. Connect your firewall's network interface 0 directly to your computer with a crossover Ethernet cable. This temporary peer network will allow you to administer your firewall from your computer. (Network interface 1 is external/WAN by default.) Power both devices on.
2. Temporarily change your computer's network settings to allow connection with the firewall by entering the following settings. Reboot if necessary to affect the changes.

**Static IP address:** 192.168.71.253 (or any subnet IP not the firewall's default IP)  
**Gateway:** 192.168.71.254 (the firewall's default IP on NIC 0)  
**Subnet mask:** 255.255.255.0  
**DNS:** none, or 192.168.71.254

3. With a browser, enter the URL **https://192.168.71.254**, accept the SSL certificate, and enter the default user ID of "gnatbox" and default password of "gnatbox". Edit the firewall's network settings using the DNS & Network Information Worksheet: click on **Basic Configuration**, then enter information in the **DNS** and then **Network Information**. Click **Save** to apply.
4. Remove the temporary connection between your computer and your firewall. Move your firewall to its intended place on your network.
5. Restore the original network settings and connection to your computer.

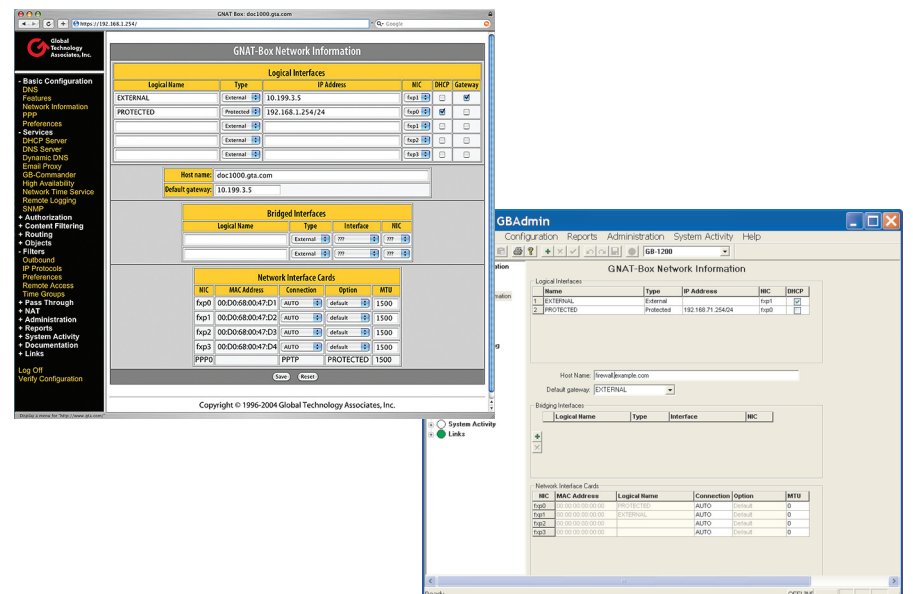
# 5 Remote Administration

You should now be able to remotely administer your firewall. GTA firewalls may be administered remotely using either a frames-capable, SSL-enabled web browser or Windows-compatible GBAAdmin software. (Local administration and firewall recovery can be done with a serial console connection.)

To administer your firewall remotely, enter the firewall's new IP address in your browser, prefixed with "https://", or open a new connection in GBAAdmin using the firewall's IP address.

Again enter the default user ID and password to log in. At this time, change your firewall's administrative password. It is **very important** to choose a strong password, containing a long, random mixture of letters and numbers that cannot be guessed.

Depending on your firewall's role on your network, you may wish to enable services such as VPN, Mail Sentinel email proxy, DHCP or DNS Proxy, DNS Server, Content Filtering or optional features. For more information on these firewall services, see the *GNAT Box User's Guide*.



# 6 Additional Options

GTA firewalls can expand their functionality with the use of additional hardware, software and subscription services. See your firewall's product specifications to see which services are available to enhance your new firewall.

Transformed by these options, your firewall can become your total network security solution.

- **Surf Sentinel** subscription for web content filtering
- **Mail Sentinel** subscriptions for email spam and virus filtering
- **H<sub>2</sub>A High Availability** to link firewall failovers
- **network interface expansion** cards for more NICs
- **additional mobile VPN** client licenses for more VPN users
- **multi-interface option** for up to 20 NICs on GB-Ware
- **support contracts**

